



ACPI in Linux

Len Brown

len.brown@intel.com

July 20, 2005

Agenda

- **ACPI Tutorial/Decoder-Ring**
- **What changed in the last year?**
- **ACPI 3.0**
- **What's next?**

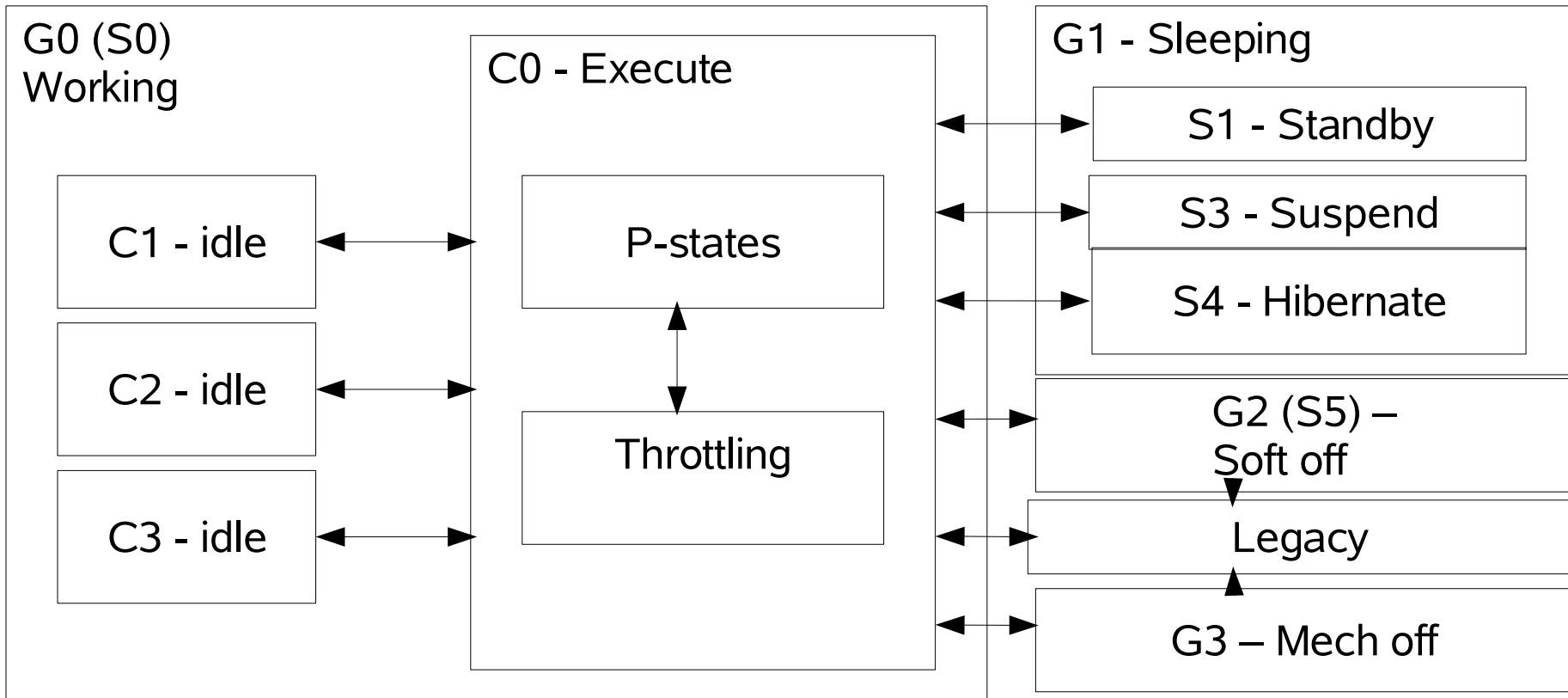
ACPI Tables

- **RSDP – Root System Description Pointer**
- **RSDT – Root System Description Table**
- **FADT – Fixed ACPI Description Table**
- **DSDT – Differentiated System Description Table**
- **SSDT – Secondary System Description Table**
- **SRAT – System Resource Affinity Table**
- **SLIT – System Locality Distance Inf. Table**

ACPI Configuration

- **Replaces Legacy configuration standards and proprietary methods**
- **Enumerates Motherboard devices:**
 - Processor
 - Memory
 - I/O devices
 - Interrupts
 - Hot Plug
- **ACPI comes with the BIOS – it does not know anything about add-in devices.**
- **ACPI augments, but does not replace PCI config.**

ACPI States



System Sleep S-States

- **S0 = Executing**
- **S1 = Standby**
-
- **S3 = Suspend to RAM**
- **S4 = Suspend to Disk**
- **S5 = Soft Power-off**

C-States – CPU Idle Power States

- Only C0 executes instructions
- C1 – Cn do no execute instructions
- Deeper C-states save more power cost more latency
- `/proc/acpi/processor/*/power`

Processor Performance P-States

- P0 = full MHz (and voltage)
- P1 ... Pn = progressively lower MHz and Volts
-
- Different platforms offer different states
- `/sys/devices/system/cpu/cpu0/cpufreq`
- `speedstep-centrino`, `acpi-cpufreq`, `cpufreq-stats`

Throttling T-states

- ~Lineary power savings w/ Mhz
- Older system had only throttling to manage processor performance.
- P-states used for modern hardware, with T-states used only for thermal emergencies.
-
- cpufreq sub-system can use only 1 method at a time. eg. p4-clockmod vs cpufreq-acpi
- ACPI in addition to hardware guards TM1/TM2

Processor Power Saving Example

C-State	P-State	Mhz	Volt	Watt
C0	P0	1600	1.5	24.5
	P1	1300	1.4	22.0
	P2	1100	1.2	12.0
	P3	600	1.0	6.0
C1,C2	from P0	0	1.5	7.3
	from P3	0	1.0	1.8
C3	from P0	0	1.5	5.0
	from P3	0	1.0	1.0
C4	(any)	0	0.8	0.5

Device D-States

- **D0 – full on**
- **D3 – full off**
- **vs. PCI Power Management**
- **Semantics are device-class specific**
-
- **Linux just starting to use ACPI D-states**

ACPI Events

- **System Control Interrupt (SCI)**
 - Fixed Feature Events (FF)
 - General Purpose Events (GPE)
 - `/proc/acpi/event`

Linux/ACPI Deployment

- **This year the major Linux distributors are all shipping with ACPI built-in and enabled-by-default on all ACPI capable architectures (i386, x86_64, ia64)**

acpid

User

/proc/acpi

Kernel

Linux/ACPI
OSL
ACPICA Core

Button

Battery

Processor

AC

Thermal

Fan

ACPI Specification

ACPI Registers

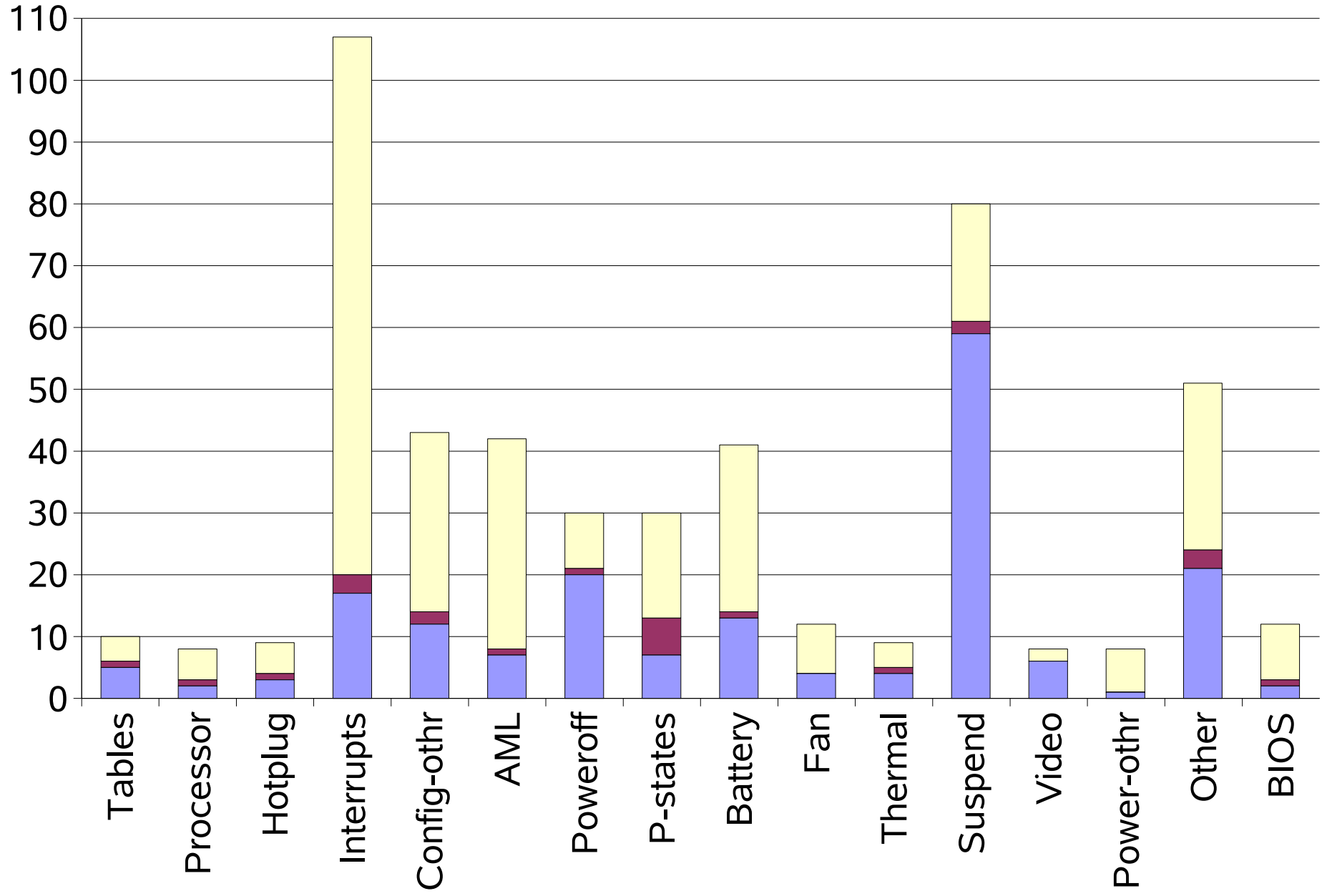
ACPI Tables

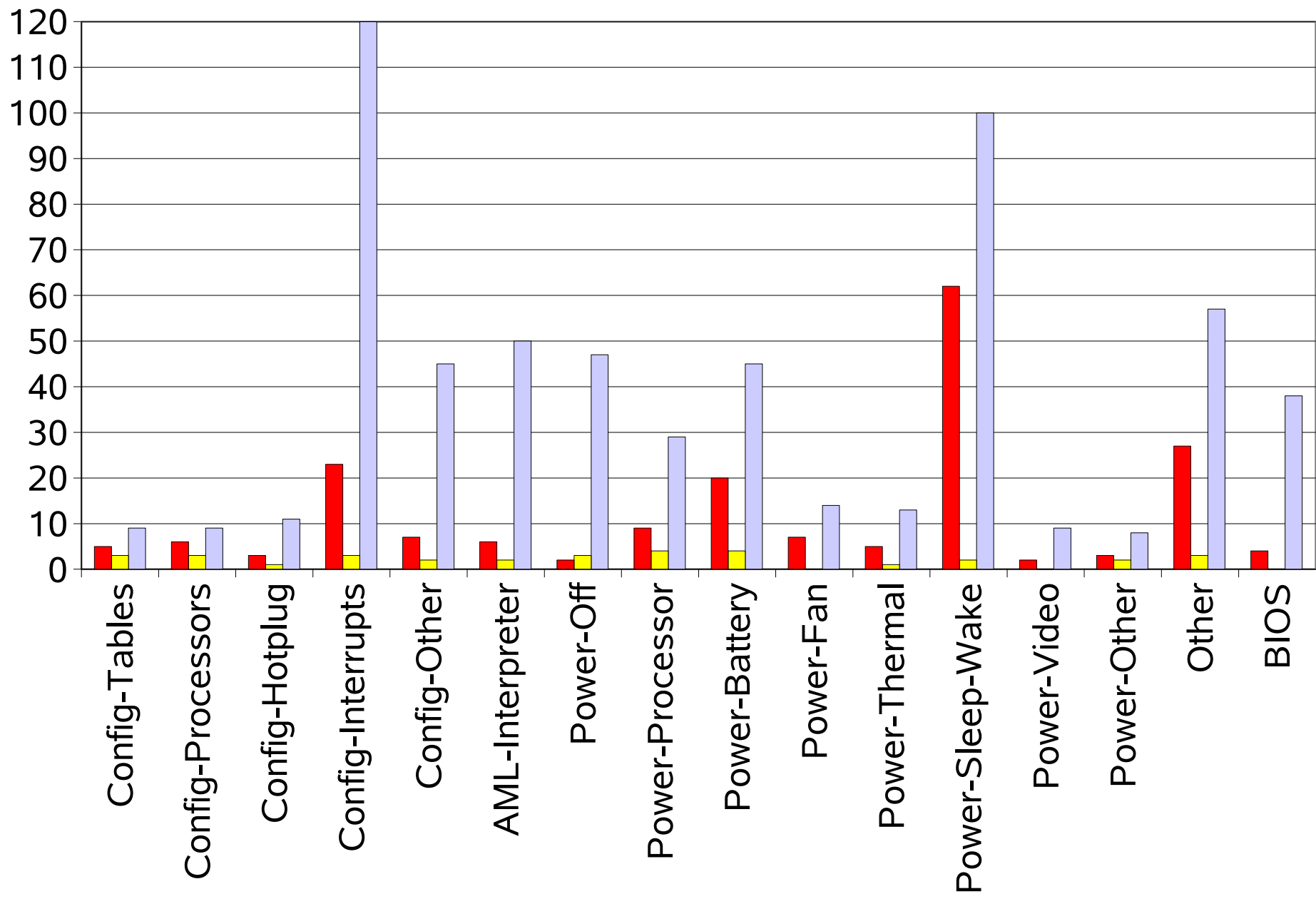
ACPI BIOS

Platform Defined

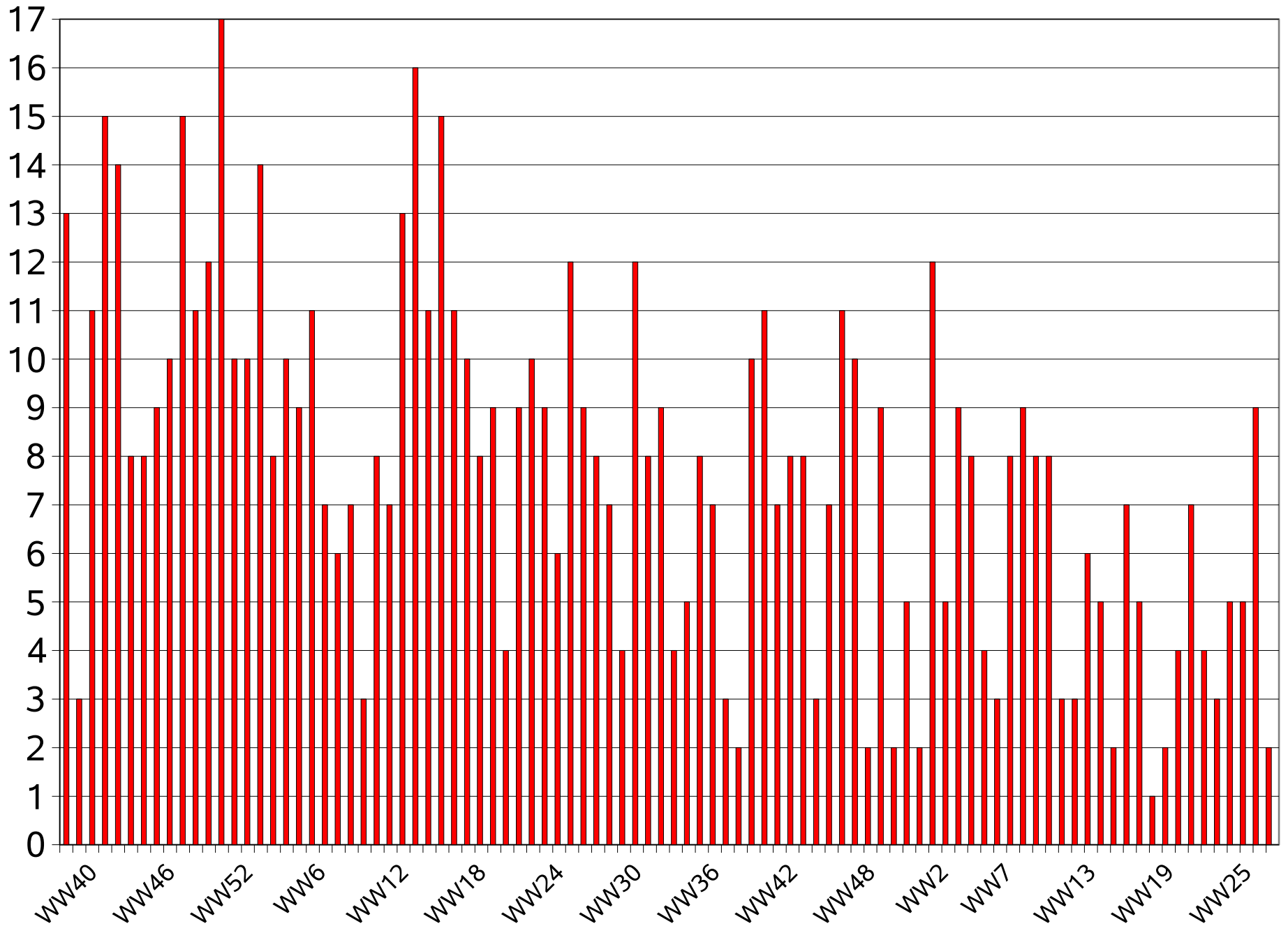
Platform Hardware

Platform BIOS, Firmware





New bugs/week



Linux/ACPI changes in past year

- Linux PNP = PNPACPI, PNPBIOS, PNPISA
- Hot Plug CPU, Memory
- SMP Deep C-states
- SMP S3/S4 progress
- video control progress
- hot-key progress
- ACPICA Interpreter progress

ACPI Specification history

- 1996 ACPI 1.0
- 2000 ACPI 2.0
- 2004 ACPI 3.0

Device Drivers vs. Power Management

- **Devices need to recognize when idle and take power saving action.**
- **Device drivers should not have to care if power management is handled by PCI-PM or ACPI.**
- **Today, no connection between (conventional) motherboard device drivers and ACPI for resources or power management.**

Linux need Power Policy Mgr

- User specifies policy
- manager communicates it to devices and sub-systems

Configuration Todo

- **Fix device tree**
- **Abstract Device Enumeration:**
 - PCI/ACPI/Legacy resources
- **Docking Station support -**

Power Management Todo

- **Suspend/Resume reliability++**
- **Abstract Device power states**
 - PCI/ACPI D-states
- **System Power policy manager**
- **C-states: tick timer stop in idle**
- **Hot Keys ++**

References

- <http://www.acpi.info>
- <http://acpi.sourceforge.net>